

# A Digital Journey Towards a Future-Ready Campus



# Quick Facts about NP

**14,800**

Full-Time Student Population

**3,000**

Part-Time Student Population

**1,800**

Staff Strength

**148,000**

Alumni Network

**44**

Full-Time Courses >

**90**

Part-Time Courses >

**9**

Academic Schools

**1**

CET Academy >

**100**

Student Clubs & Societies >



A Great Place to Work.  
A Great Place to Learn.

# 4 PST INITIATIVES

*We innovate and serve citizens better*

*We go digital*

*We skill up and adapt*

*We engage citizens better*

## Going Digital



## Building Capabilities for Organisational Transformation



Principal Charles Si

## Principal's Message on Transformation

Chances are you woke up to an alarm clock from your phone this morning, the last photo you took was a selfie, and the last song you played was digital. Our private lives are very much in the 21st century. It is time to bring our work life there as well.

Resources are going to be tighter, so we have to work smarter. There is really no other choice since working harder and working longer are both less desirable. The good part about working smarter is that we get to play with new technology and design away some of the most repetitive, mundane and frustrating parts of work.

There's really no need to be afraid of transformation. We have been through it all before and thrived. Remember the days of OHPs, transparencies, typewriters and night soil collectors? Adapt quickly, don't be afraid to ask questions and try new things. **Learn to be lean, agile and digital.**

# Ngee Ann Polytechnic Leaders' Retreat

COMM  
TECHNOLOGY

HUMANITIES &  
SOCIAL SCIENCES

HS  
HEALTH  
SCIENCES

FMS  
FILM & MEDIA  
STUDIES

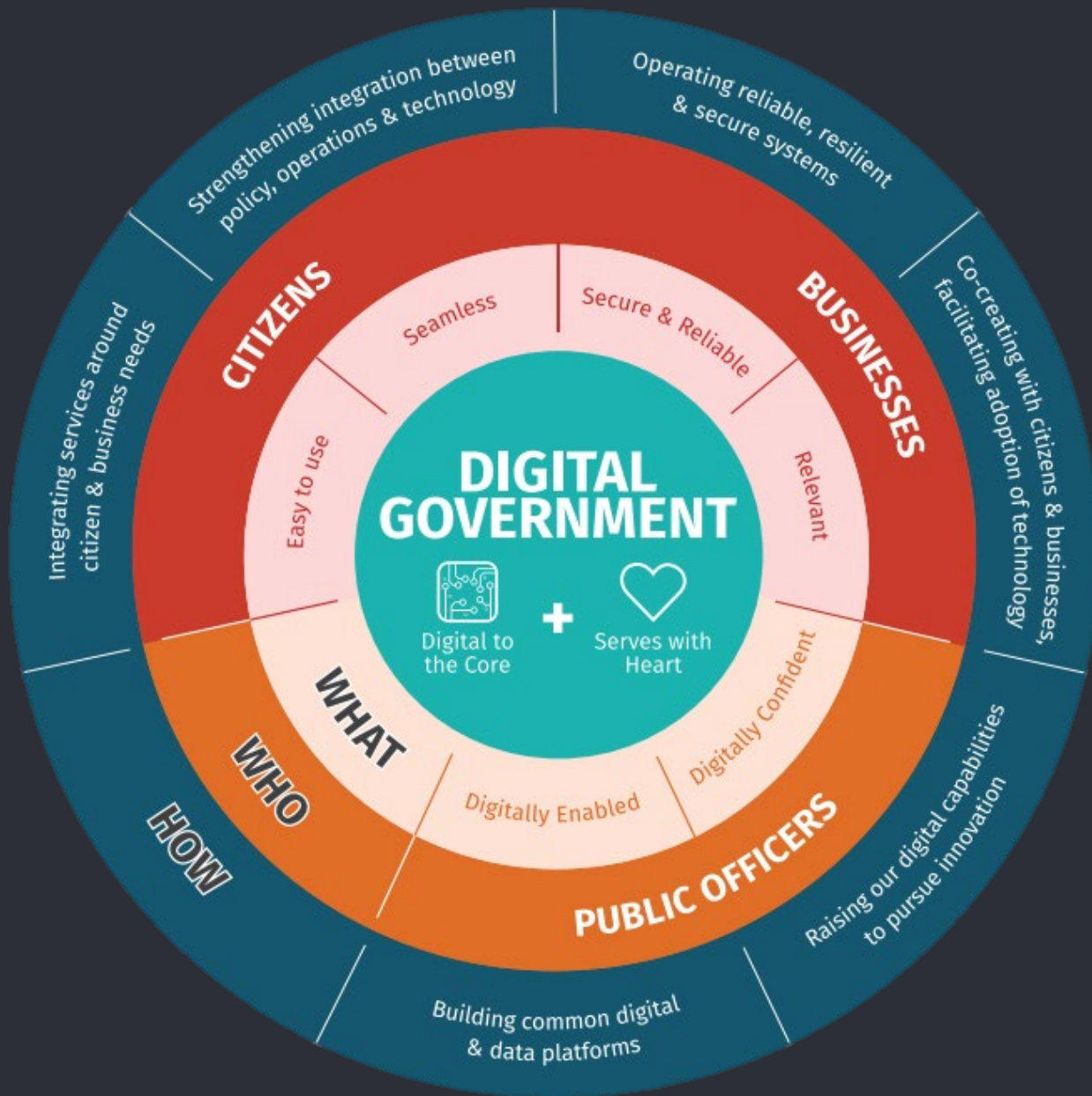
50%  
ENGINEERING

YOHAN

YOHAN

**Ambition** Future Ready Campus  
**Alignment** Culture of Collaboration  
**Action** Digitalisation





**Digitalisation** is a key enabler but it is not an end goal in itself.

Being “digital to the core” is about using **data**, connectivity and **computing** decisively to **transform** the way we serve citizens and businesses and

the way we **enable** our public officers to contribute fully to their work.

# NP's Vision

## Data-empowered Future-ready organization

Every NP process is **digital** to the core.

Every NP staff is **data-empowered**  
to leverage on data to **transform** the  
way we work and serve.

Image from GovTech Digital Government Blueprint

**NGEE ANN**  
POLYTECHNIC

**CLTe** The Centre for  
Learning & Teaching  
Excellence

Lean Core

Data Analytics Team

Drive and facilitate NP's DA  
development

In **partnership** with schools,  
departments and data  
custodians.

NP's  
Approach





Lean Core

Data Analytics Team

Develop “**Citizen Data Scientists**” to perform **self-service** data analytics (Prepare, Analyse, Distribute).

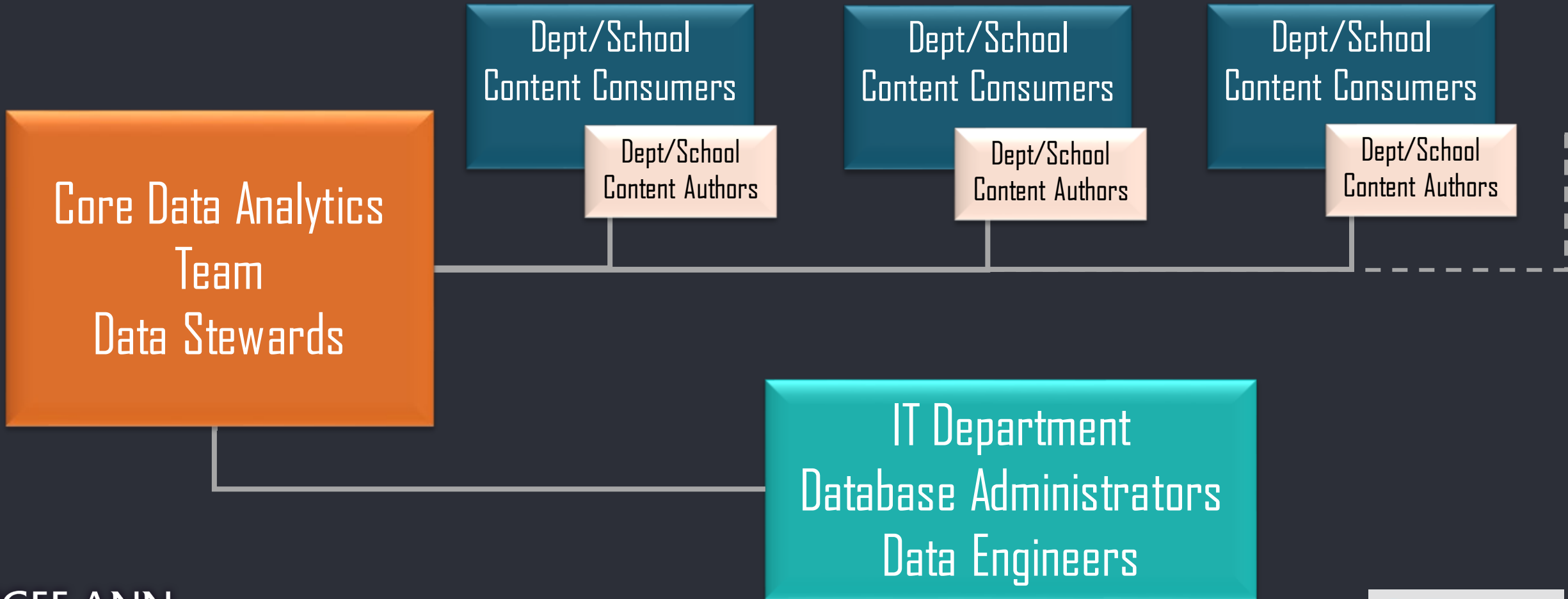
In every school and department.

NP's  
Approach



# Lean Core

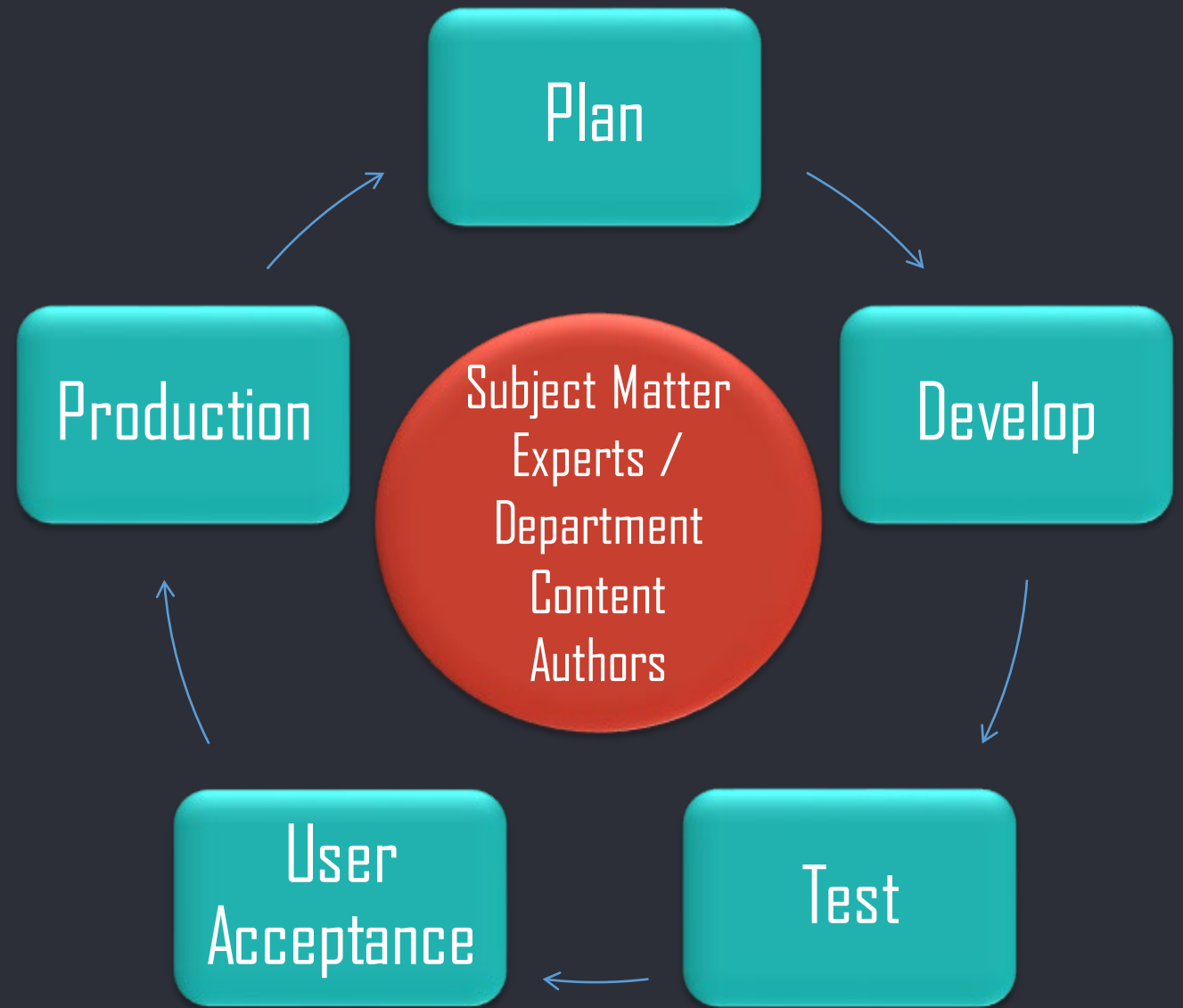
## Data Analytics Team





# Self Service Agile Methodology

Image from Infocomm Media Development Authority





**Data** *Made Available*

**Computing** *Via Analytics Tools*

**Enable** *Through Training*

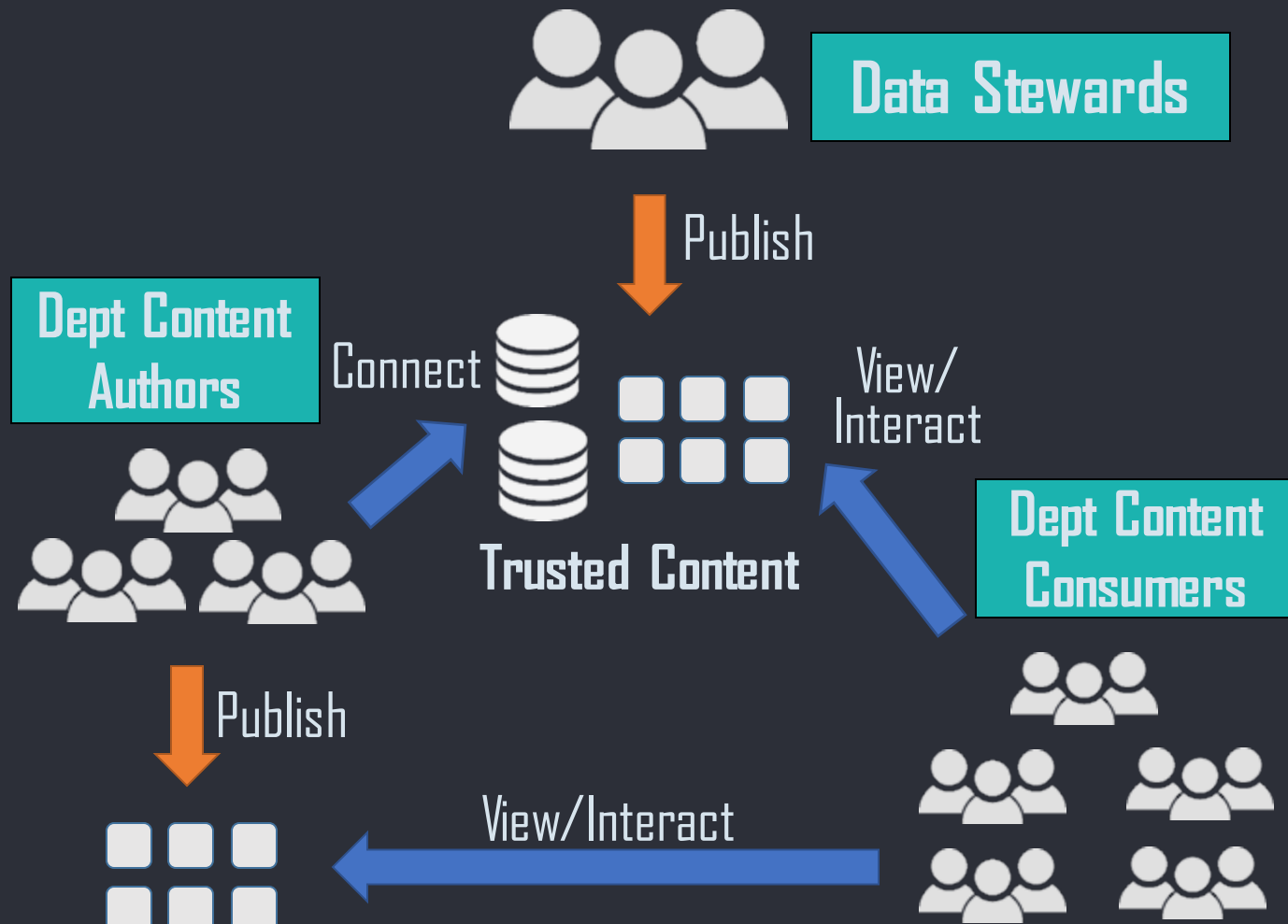
**Transform**

Image from GovTech Digital Government Blueprint



**Data**  
**Made Available**

# Governed and Trusted Data



# Computing Via Analytics Tools

Previously



Data Prep

Analyse

Distribute

Now

Data Science and Machine Learning Platforms

Analytics and Business Intelligence Platforms

alteryx



tableau

## Automated, Secured, Interactable

# Enable Through Training

End Users' Training

Sharing of Best Practices

One-to-One Consultation Clinics

Enhanced  
Courses

Onboarding Courses  
Identified content  
authors

Primer Courses for all staff

**ACTION**

Inform Policies & Strategies



**INTELLIGENCE**

Draw Insights

Analytics & Visualisation



**DATA**

Improve Productivity

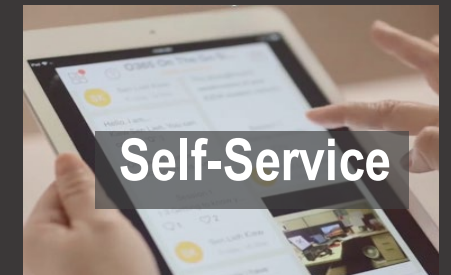
Paperless



Automation



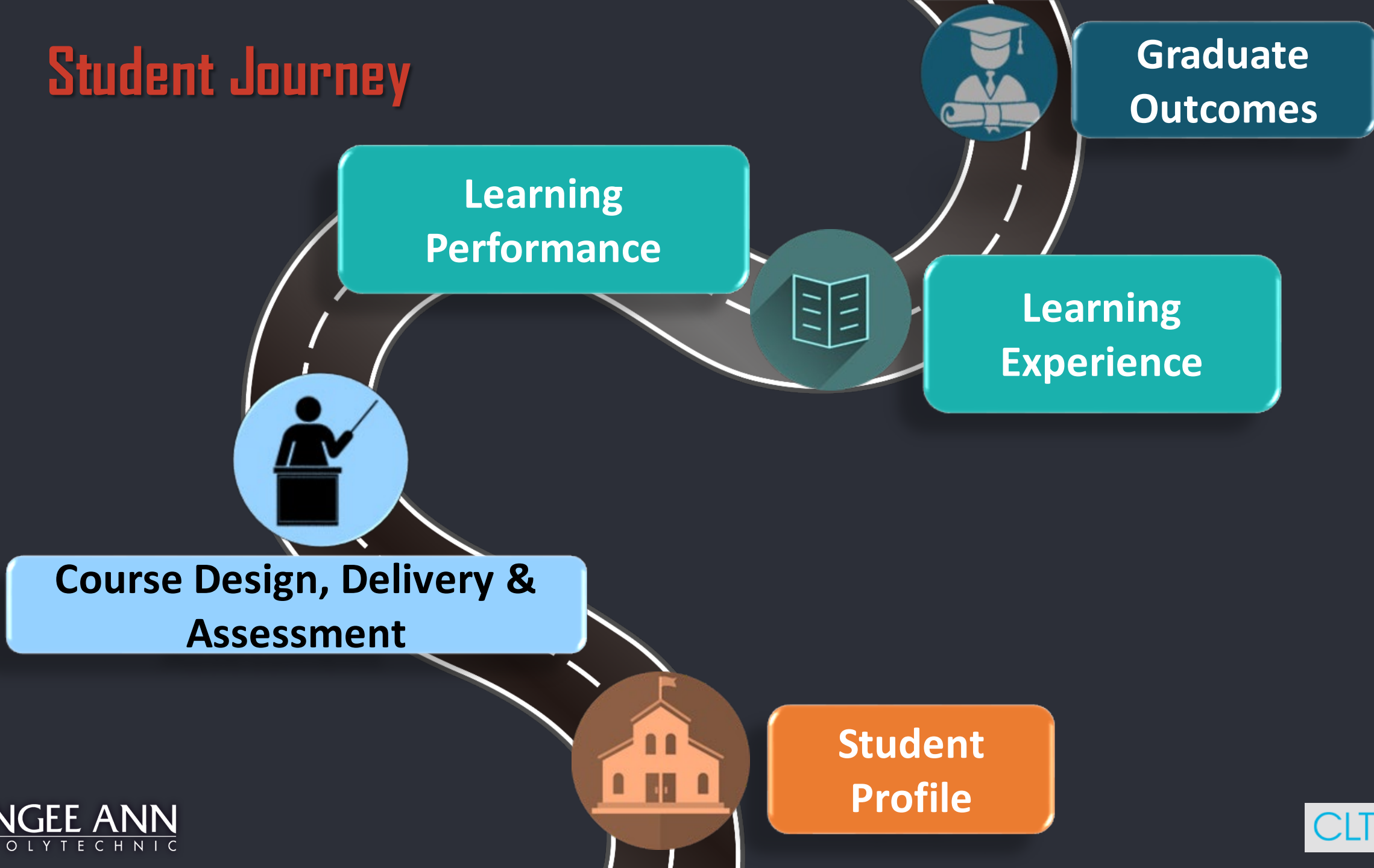
Self-Service



**Transforming the way we work**



# Student Journey



**Graduate  
Outcomes**

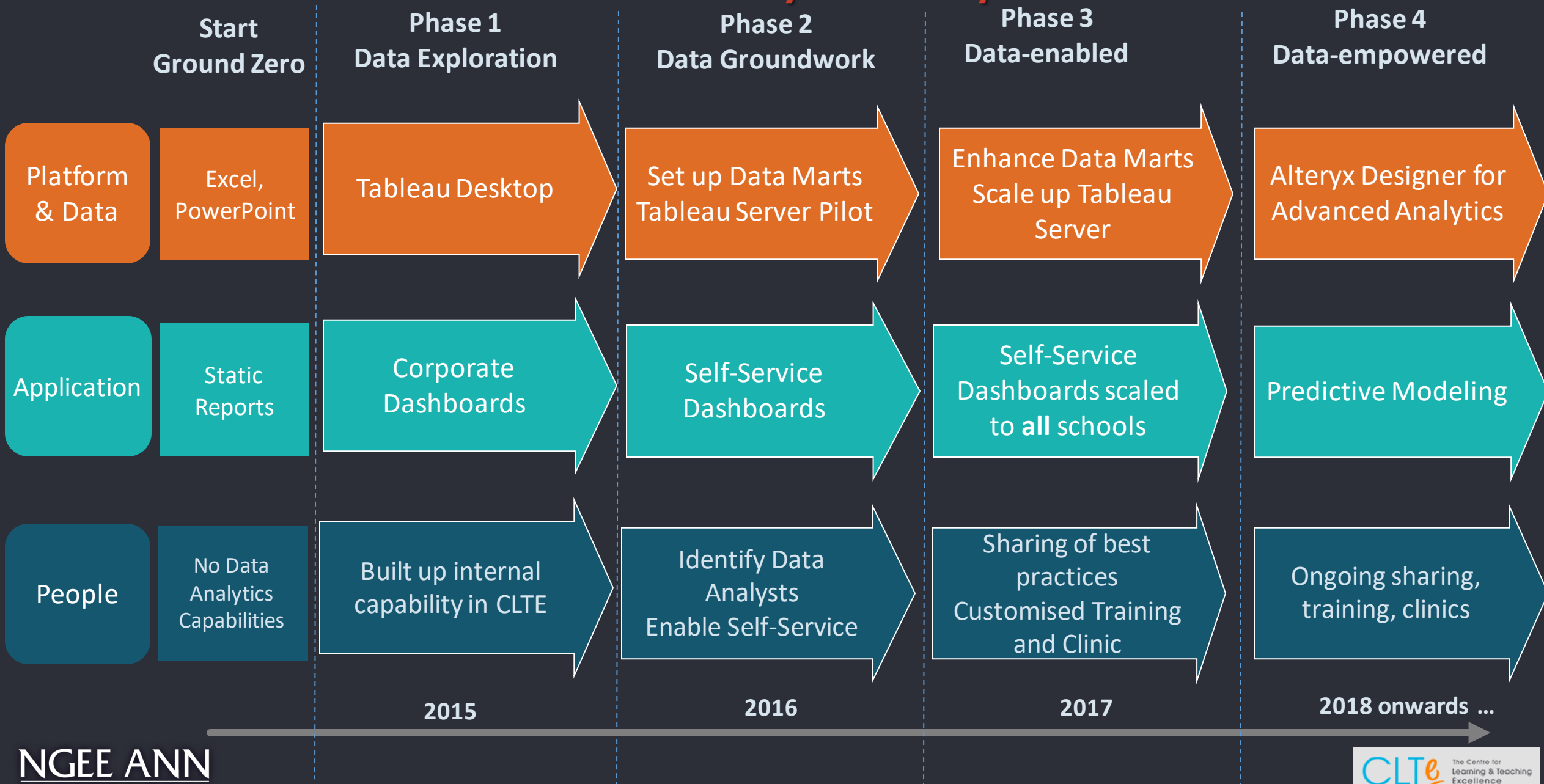
**Learning  
Performance**

**Learning  
Experience**

**Course Design, Delivery &  
Assessment**

**Student  
Profile**

# Academic Quality Data Analytics





Work Smarter

Help Each Other



# Key Takeaways



Place analytics as a strategic priority



Establish a central analytics team



Strengthen analytical capabilities across departments



Build up community of practice



Thank You